



Commission Economic Recovery Listening Sessions

Port of Seattle Commission

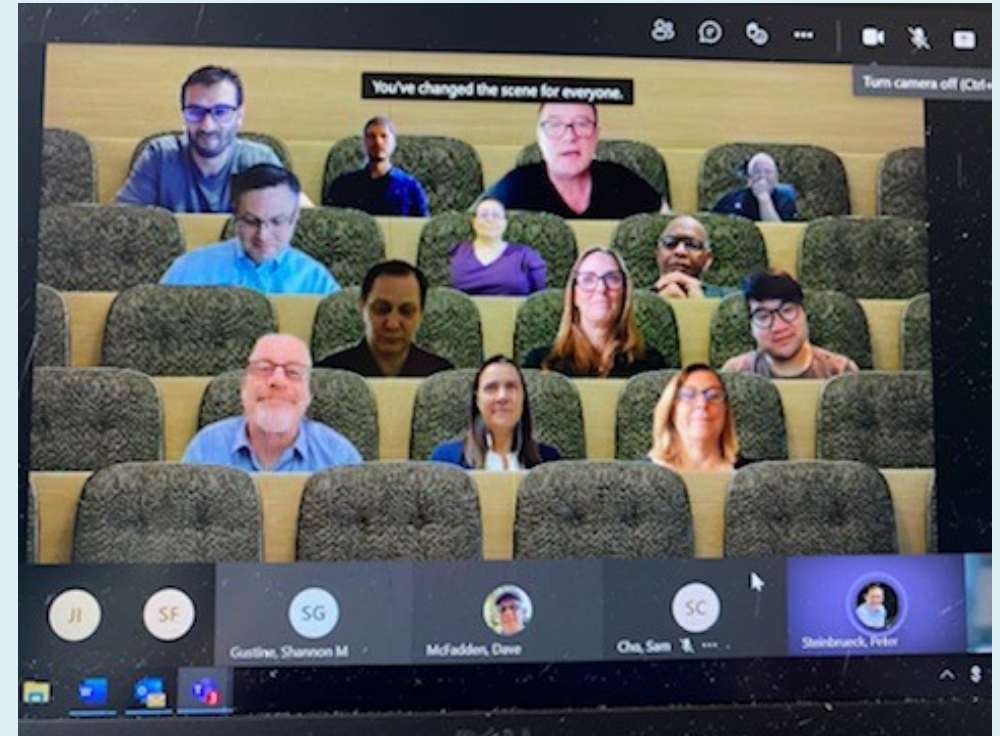
Introduction

- COVID disruption impacts
- National recovery progress
- Port Commission response



Listening Tour

- Commissioner Cho initiates listening tour for Port Stimulus
- 13 sessions 101 participants
- Leaders and stakeholders from around King County
- Key sectors and interest areas



The image features a stylized map of the Puget Sound region in Washington state, with landmasses in light blue and water in a darker blue. A large green banner at the top contains the title. Five semi-transparent green callout boxes are overlaid on the map, each containing the name of a business group and a list of their key concerns or focus areas.

What we heard

Seattle Business

Advocate and Convener, Downtown and Neighborhood Business Recovery, Tourism Promotion

Eastside Business

Growth, Access to Recovery Resources, Reopening

Sound Cities Association

Affordable Housing, Port as Convener, Capacity-building

Duwamish

Career Pathways, Port/Duwamish Communication, Contracting Barriers

South King County

Basic Needs, Capacity-building, Workforce Development

What we heard



Aviation

Relief initiatives, Re-staffing,
Port as Coordinator



Maritime

Workforce Development,
Public Safety/Public Order
Advocacy, Regulations



Represented Labor

Disproportionate Impacts of
Pandemic, Jobs Creation
through Investment in
Capital Projects



Contractors

Capital Spending, Growth
Trajectory,
Cost Escalators, Design-
Build, Minority
Contracting

What we heard



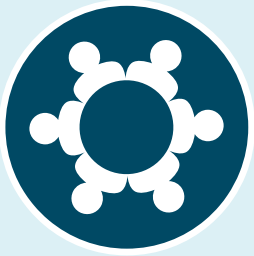
Environmental

Port as Advocate,
Electrification, Air Quality



Arts

Affordability,
Paid Opportunities,
Arts Ecosystem



Equity

Equitable Recovery, Port
Contracting Improvements,
Investments in Youth

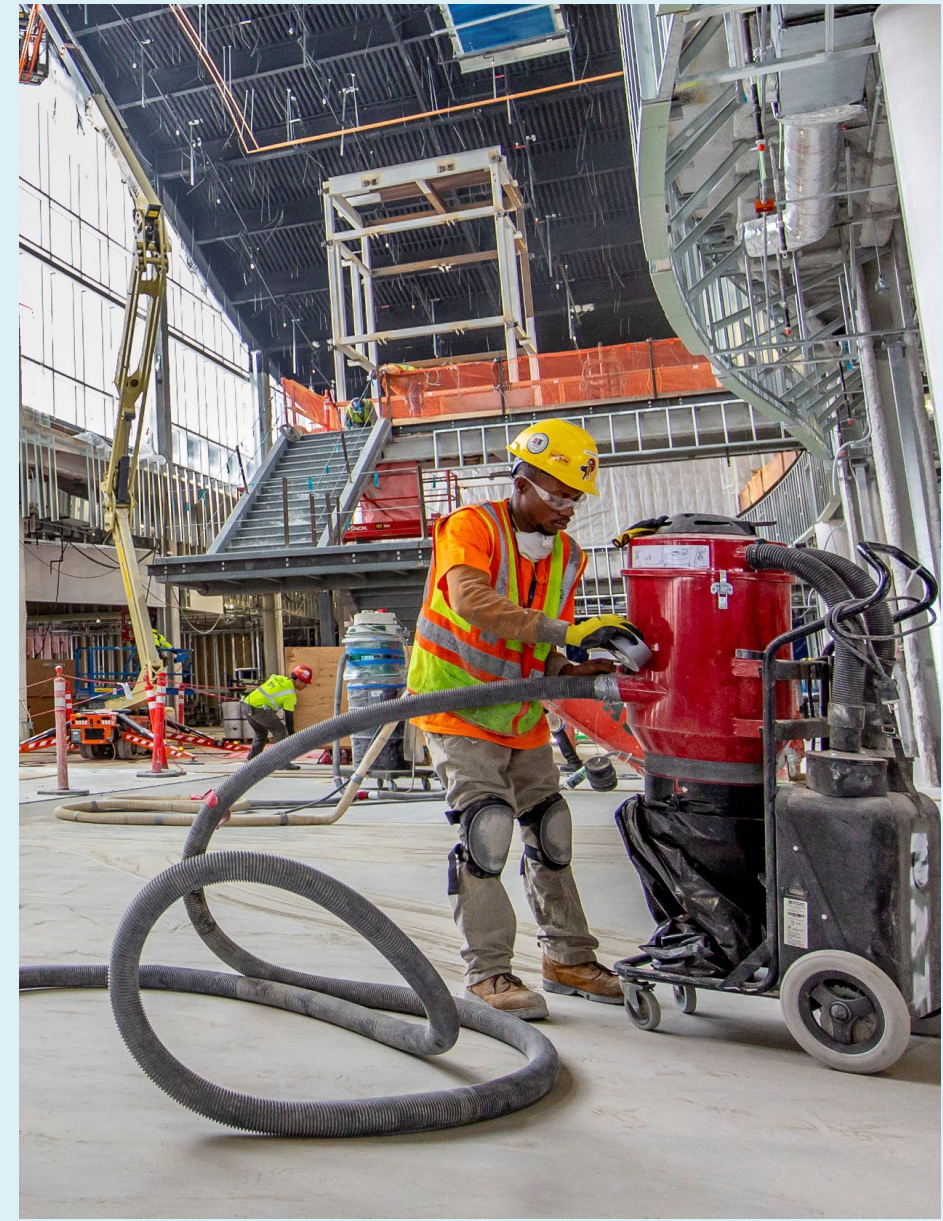


Workforce Development

Career Pathways, Port as
Convener, Pandemic Impacts

Takeaways

- The Port is a key economic engine for the region.
- Keep this engine running and step on the accelerator - Do more, go faster, go further.
- We are going in the right direction.
- We have more work to do and are poised to help lead the region's recovery.



Issues

- Disproportionate impacts of pandemic
- Contracting and grant processes
- Strategic economic rebound
- Job losses and lack of opportunities
- Uncertainties driven by pandemic



Actions

- Invest in capital programs and operations
- Support jobs and workforce development
- Invest in community programs and tourism
- Convene and advocate with our partners
- Equitable, sustainable, inclusive recovery
- Include communities at Port tables
- Simplify contracting to serve equity



Outcomes



2022 Budget Priorities



Medium and Longer-Term Efforts



Policy Changes



Partnerships



Questions for Commissioners



What were your key takeaways from these listening sessions?



How did this process influence your 2022 budget priorities?



Was this a valuable process that you would like to repeat in the future (perhaps next year for the 2023 budget)?